

FRYSEROM

MONTASJEANVISNING

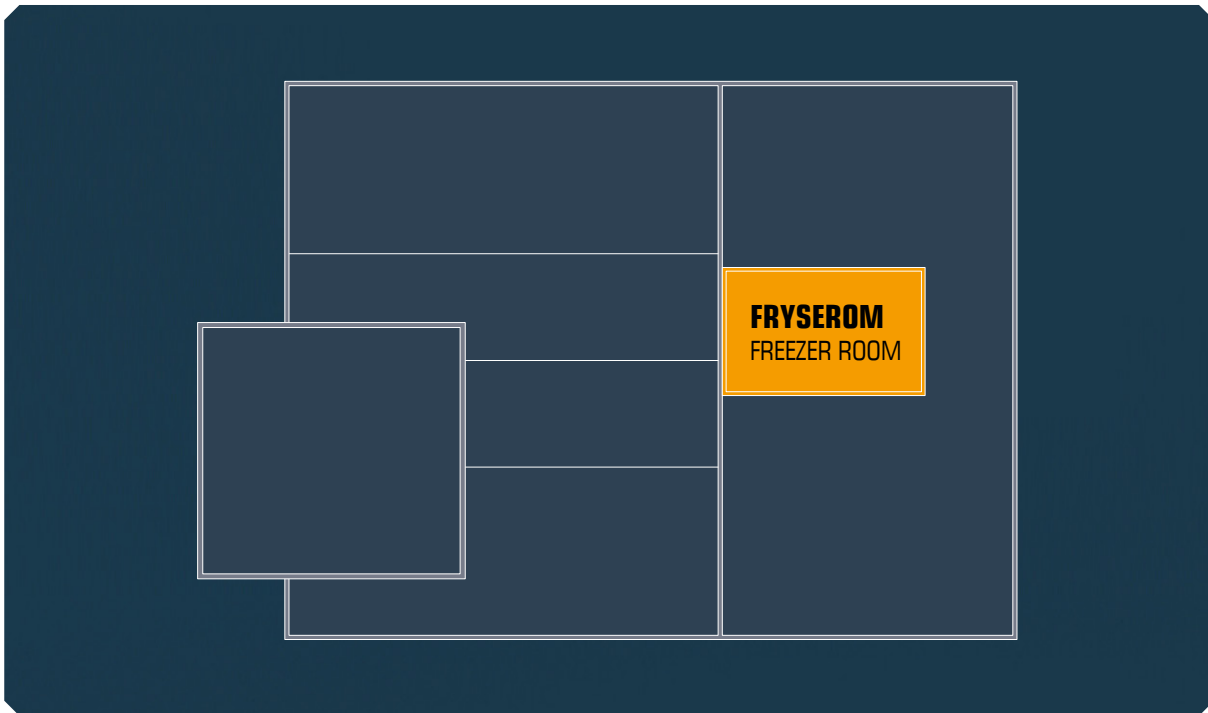
FREEZER ROOM INSTALLATION INSTRUCTIONS



(1) PLASSERING AV FRYSEROM / LOCATION OF FREEZER ROOM

Sjekk tegning. Montasjeplass må være tørr og gulvet må være avrettet.
Merk opp området, sjekk at alle vinkler er rette og at diagonalene er like.

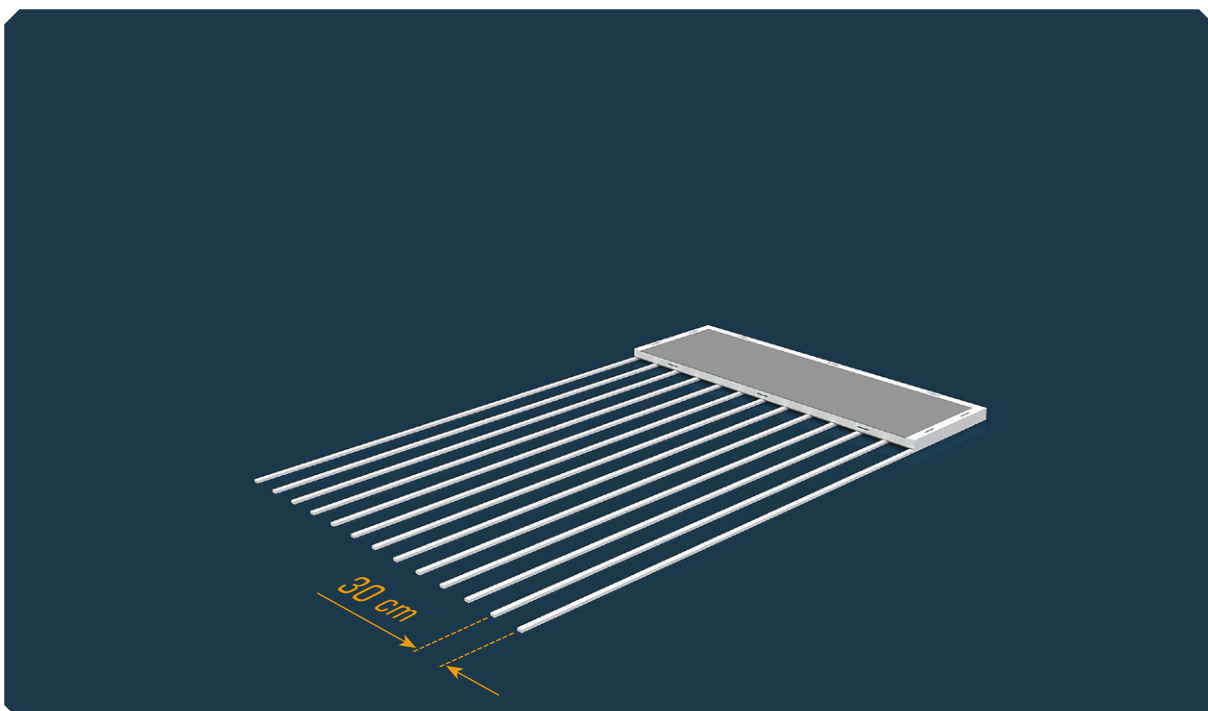
Check drawing. The installation location must be dry and the floor must be levelled.
Mark out the area. Check that all angles are right and that the diagonals are equal.



(2) LEKTER / BATTENS

Legg ut lekter på gulvet og rett av disse for å få et plant og stødig underlag.
Disse skal ligge på tvers av gulvskjøter c/c 300 mm.
Legg ut gulvpanel.

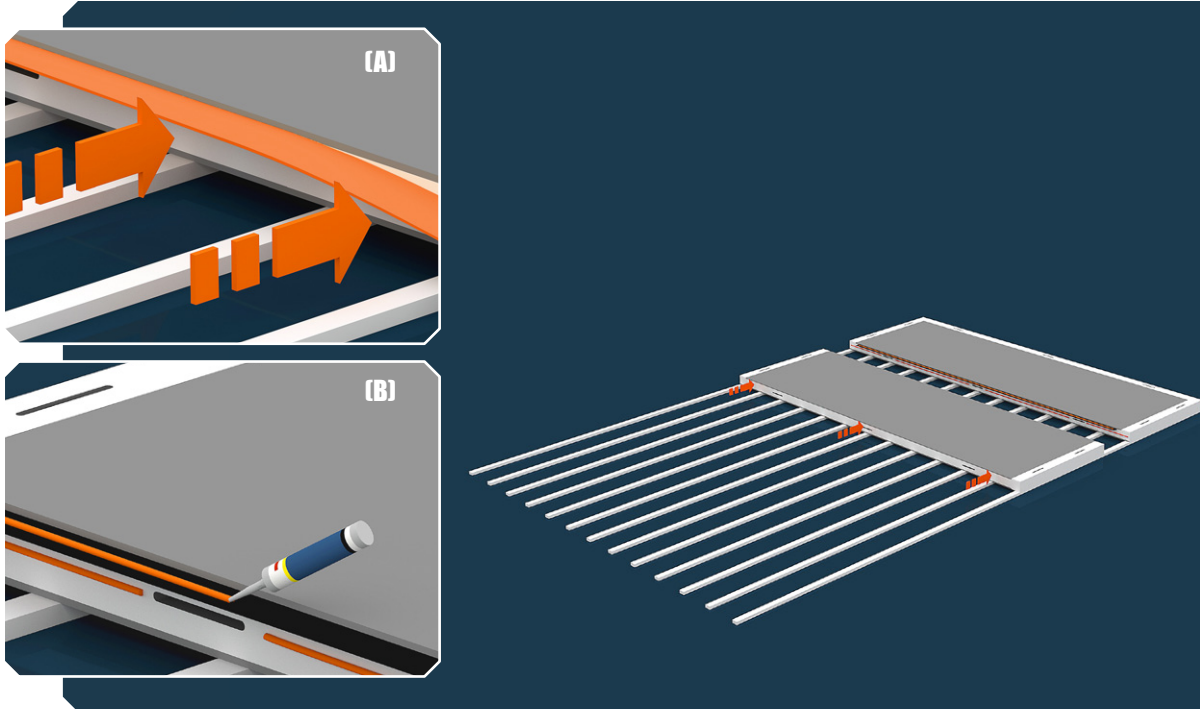
Lay out battens on the floor and align them to obtain a flat and sturdy base.
These must be placed across floor joints (c/c 300 mm).
Lay out floor panels..



GULVPANEL / FLOOR PANELS **(3.1)**

Legg ut gulvpanel og se til at disse ligger stødig.
Monter dørkelist i plast (A) mellom gulvpanelene.
Legg fugemasse (B) mellom panelene.

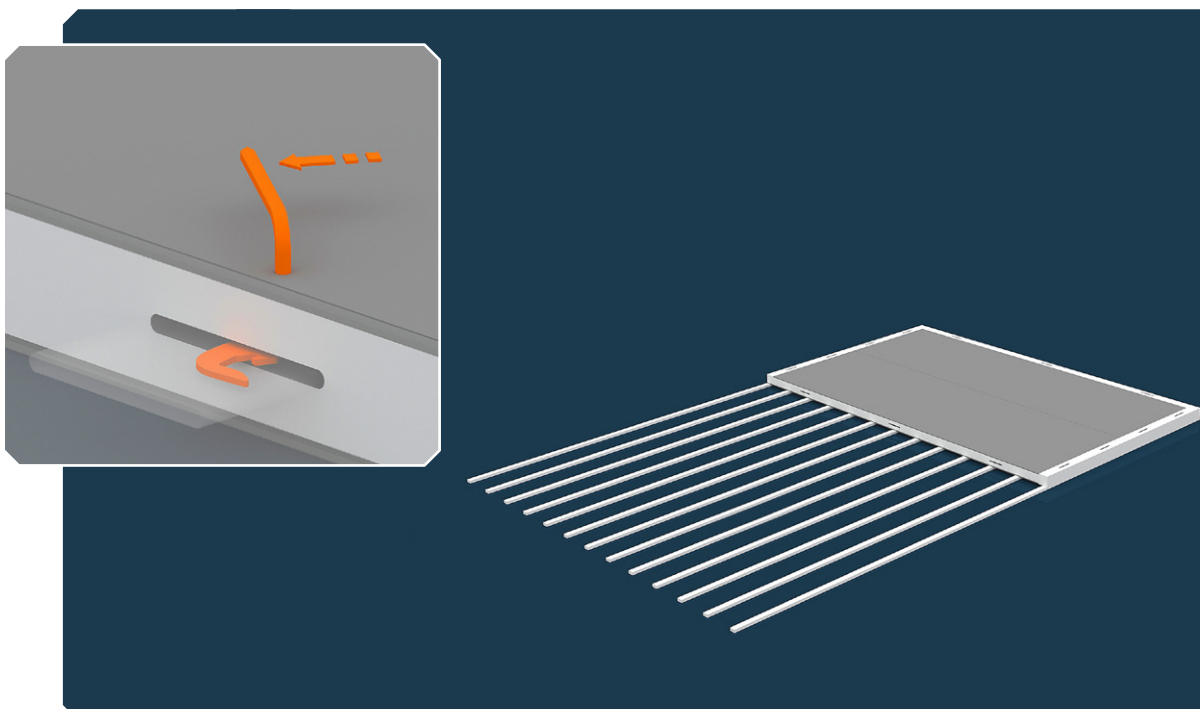
Lay out floor panels and make sure they are securely in place.
Fit plastic floor strips (A) between the floor panels.
Apply sealant (B) between the panels.



GULVPANEL / FLOOR PANELS **(3.2)**

Lås panelene sammen med unbrakonøkkel.

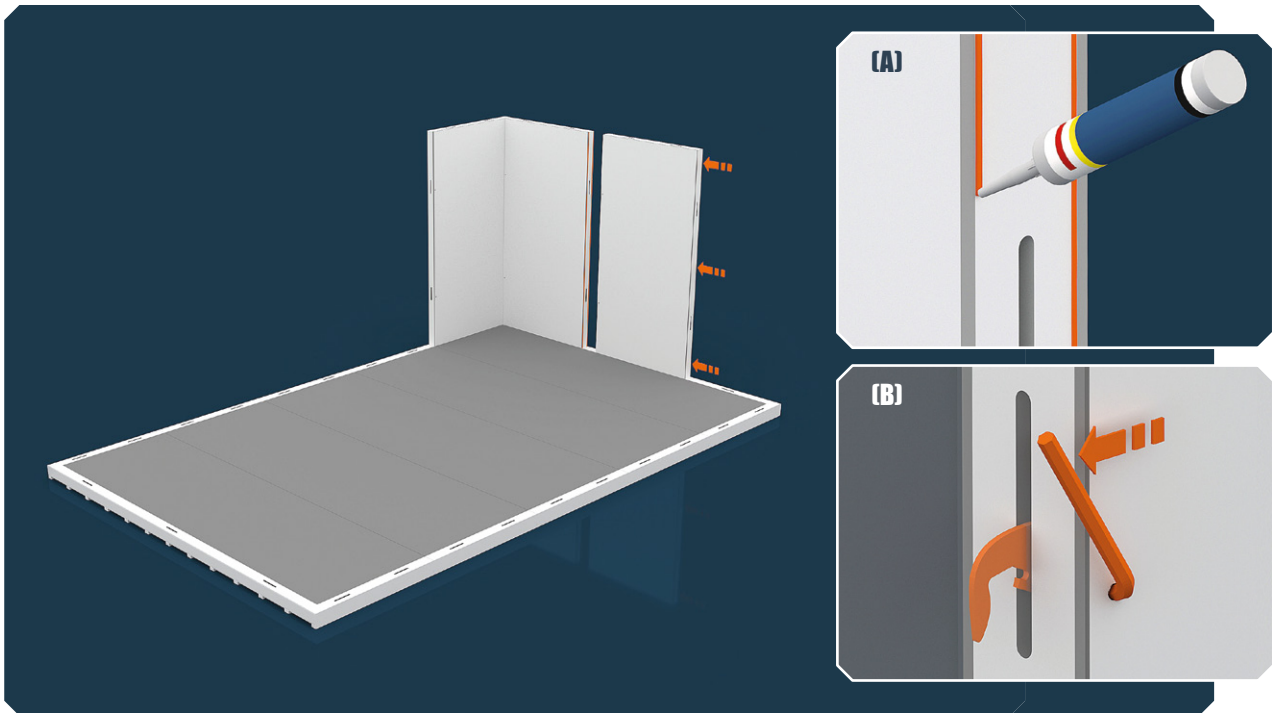
Lock the panels together using a hex key.



[4] VEGGER / WALLS

Sett opp bakvegg og vegger fremover mot front som en "U".
Påfør 2 striper fugemasse som vist på tegning (A).
Fug skjøtene mellom panelene innvendig på synlige flater.
Fuging må utføres ihht. Teknisk Godkjenning.

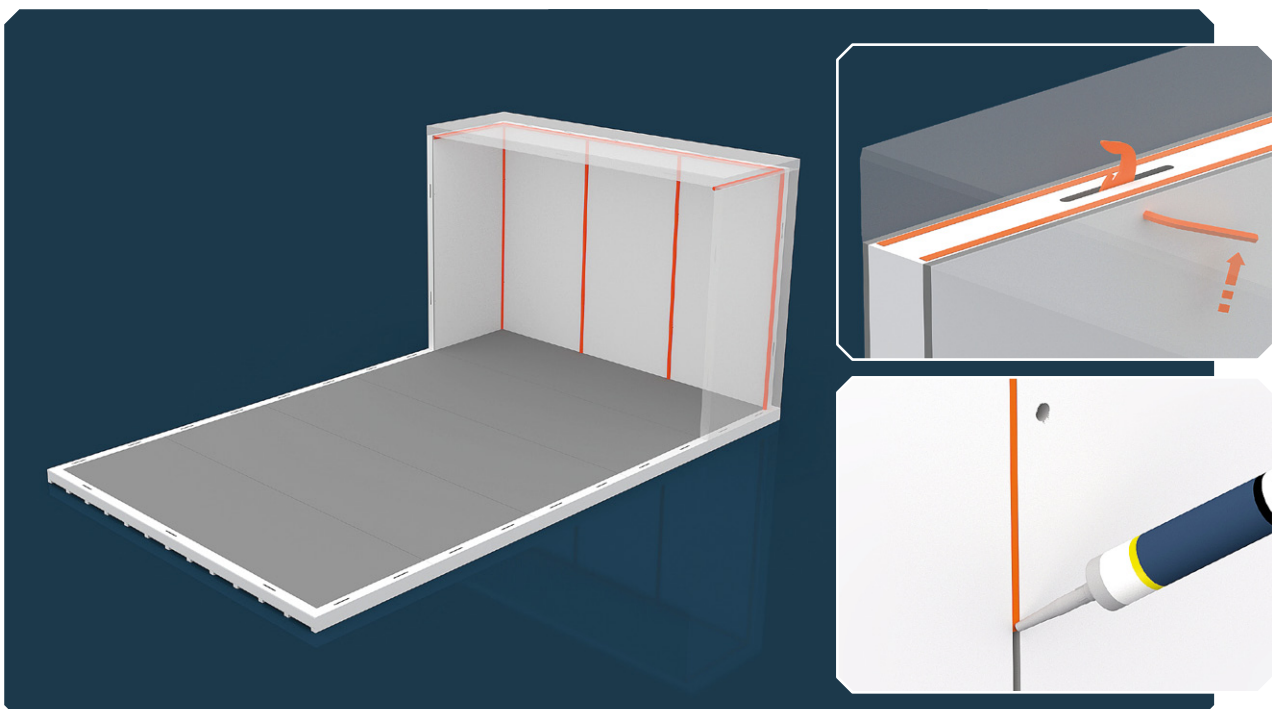
Erect rear and side walls in the shape of a "U". Apply two strips of sealant as shown on drawing (A). Seal the joints between the panels internally on visible surfaces. Joint sealing must be carried out in accordance with Technical Approval.



[5] TAK-PANEL / CEILING PANELS

Legg på tak etter hvert som du monterer.
Fuge masse påføres som på vegg (4).

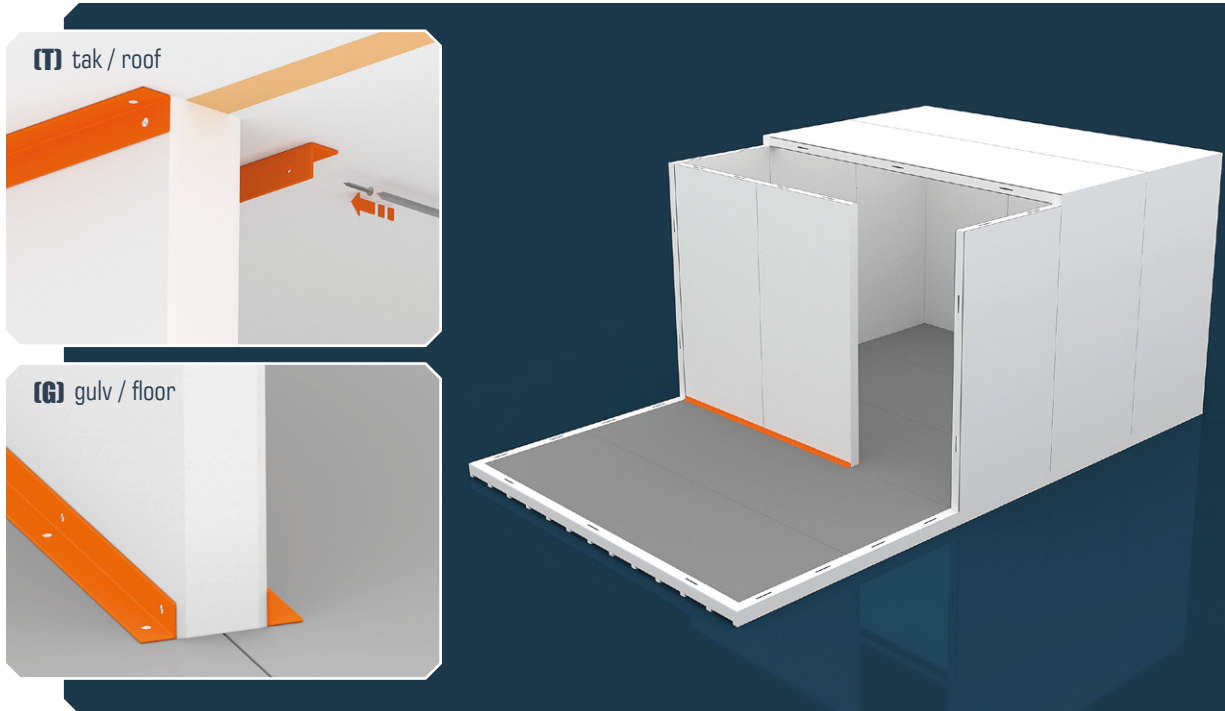
Gradually install the ceiling as you assemble.
Apply sealant as on wall (4).



SKILLEVEGGER / PARTITION WALLS [6]

Monter panel til gulv og tak med vinkelbeslag.
Fest beslagene med skruer.

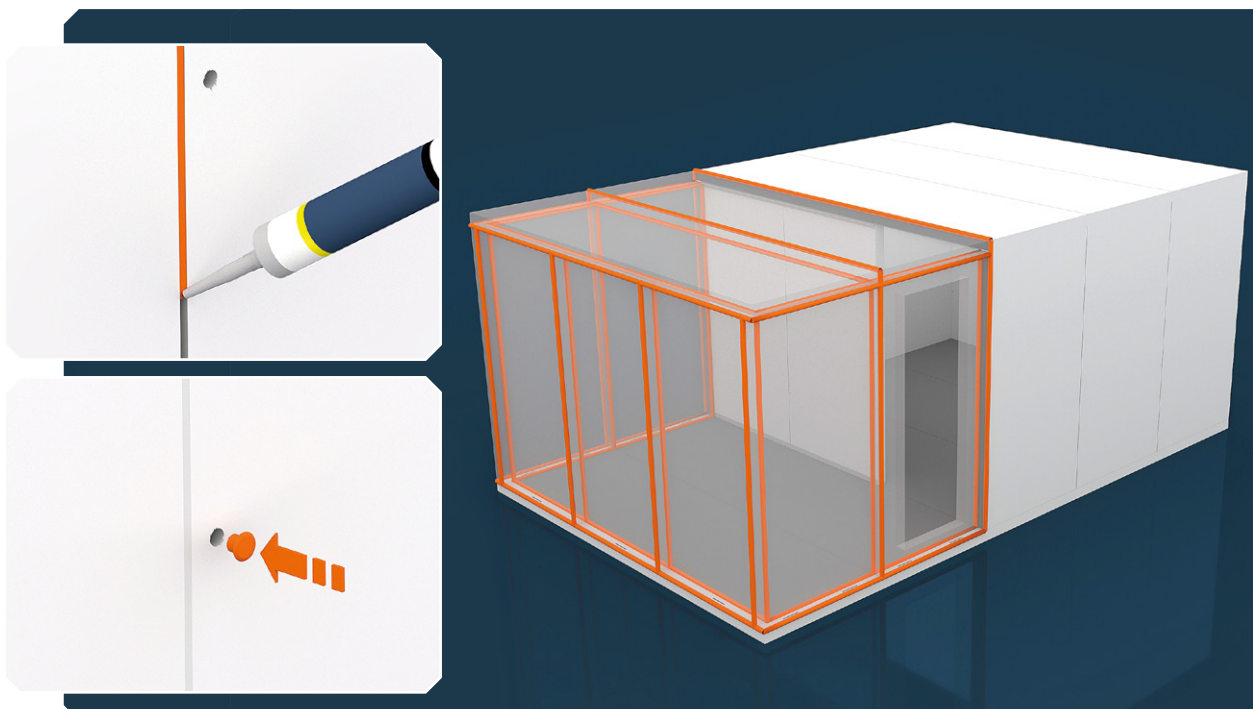
Fit the panels to the floor and ceiling using angle brackets.
Secure the fittings with screws.



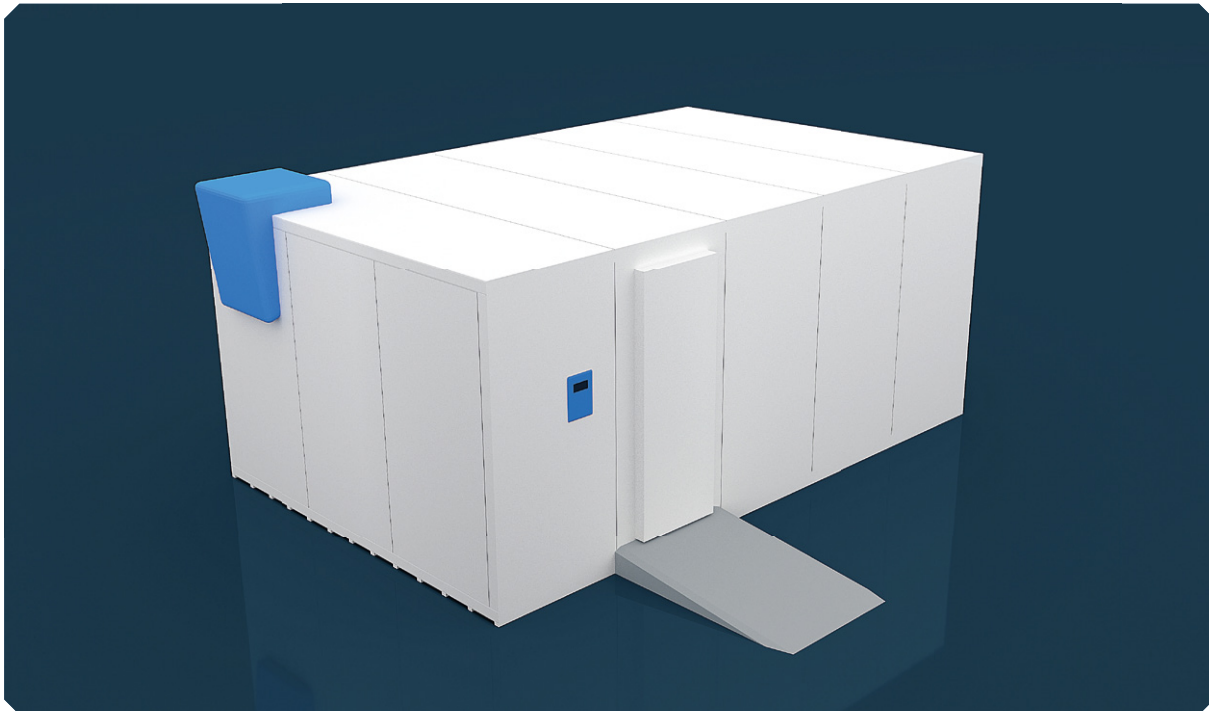
FUGING / APPLYING SEALANT [7]

Fug skjøtene mellom panelene innvendig og utvendig
på synlige flater.
Fuging må utføres ihht. Teknisk Godkjenning.

Seal the joints between the panels internally and
externally on visible surfaces.
Joint sealing must be carried out in accordance with
Technical Approval.



(X) EKSTRAUTSTYR / ADDITIONAL EQUIPMENT



Vi leverer også:

- » skyveporter
- » standard dører
- » kjøre-ramper
- » ventiler
- » trykkutjevningssluker
- » pvc-gardiner
- » innestegningsalarm

We also deliver:

- » sliding doors
- » standard doors
- » vehicle ramps
- » valves
- » pressure equalisation hatches
- » PVC curtains
- » man in cold room alarm

 **FRESVIK
PRODUKT**
Fresvik Produkt AS

Fresvik - Hovudkontor
N-6896 FRESVIK
Tel: 57 69 83 00
E-Post: post@fresvik.no

Fresvik avd. Drammen
Tollbugt. 105
N-3041 DRAMMEN
Tel: 32 20 82 00

www.fresvik.no